

# SICEN

• PROTECTION THROUGH INNOVATION •



CONSTRUCTION &  
**INDUSTRY**

SICEN

**Construction  
&  
industry**

**Our  
strengths  
=  
Your  
Guarantee**

**Extra  
customer  
support**

**Product  
highlights**

**Textile  
architecture**

**Rolling  
doors**

**Fencing &  
facades**

**Waterproofing  
membranes**

**Filtration &  
construction**

**Ventilation**

**Pond**

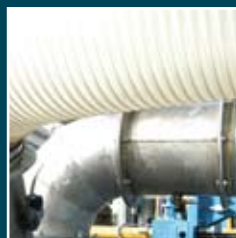
**NDEX**

# Protection through Innovation



# WELCOME TO THE WORLD OF CONSTRUCTION





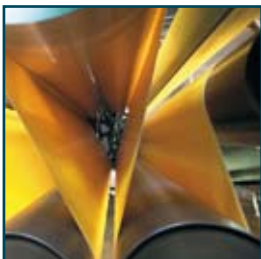
# C ONSTRUCTION & INDUSTRY

This 'construction' range is especially designed to guide you through our range of technical textiles used in construction and engineering. Sioen stands for a combination of state-of-the-art spinning and weaving technology with the most modern coating techniques. This is our customer's guarantee for an excellent quality. We have over 50 years of experience in technical textiles for following applications:

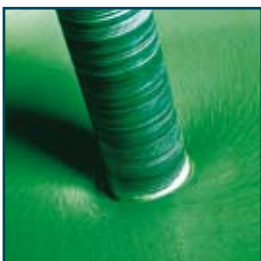
- Textile architecture
- High speed doors
- Fences and facades
- Waterproofing
- Filtration and construction
- Ventilation
- Insulation
- Pond

# OUR STRENGTHS = YOUR GUARANTEE

## Our technical know-how



## Our intensive R&D and expertise



## Our team



The multilingual Sioen staff is known for its hands-on mentality. Besides being fast and cost-conscious, they always strive for a customized solution in a helpful and friendly way. Our customers always come in first place.

## Our large product portfolio



We offer a large range of products, colours and widths.

## Our state of the art production plants



## Our financial health



We are part of a strong international stock quoted group, Sioen Industries nv. The solid structures and sound financial basis make us a reliable partner.

## Our service



Speed,  
performance,  
diligence,  
dedication

## Our focus on solutions



Finding your tailor made solution is the result of interaction between our customers, our suppliers and our R&D team. Providing you with answers is the first step towards a solution.

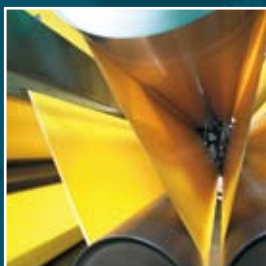
## Our product quality



- We stand for a high quality level.
- We continuously invest in new machines and equipment which gives us a competitive edge over the competition.
- Your feedback is an active source to further fine tune our qualities.



## Our 50 years of experience



# E XTRA CUSTOMER SUPPORT

## We provide concepts and solutions

For every request we try to find the right solution. Together with our engineers, product managers, market specialists and researchers, we put a lot of effort in finding and producing the right product that fits your needs. The sales team is available from Monday until Friday from 8 until 18hours.

Tel: 0032 51/740.900 - e-mail: [sioline@sioen.be](mailto:sioline@sioen.be)

## We offer support in product/ market development

Please feel free to contact us in case you wish to further explore new markets or develop new products. [info@sioen.be](mailto:info@sioen.be)

## We offer marketing support

In the separate leaflet 'SUPPORT', you will find the complete overview of our sales support items: extra training, brochures and displays.



## We provide training

At our Ardoorie headquarters, we boast a 8.000 m<sup>2</sup> showroom. It is the place to see new products, to get to meet the team and to make you more familiarized with the technicity of our products.

Apart from meeting again with your designated sales manager and appropriate sales assistant, it gives you the opportunity to become more acquainted with the Sioen people behind the scenes (quality, R&D, logistics, marketing,...).



# PRODUCT HIGHLIGHTS

## C ONSTRUCTION & INDUSTRY

This 'construction' range is especially designed to guide you through our range of technical textiles used in construction and engineering. Sioen stands for a combination of state-of-the-art spinning and weaving technology with the most modern coating techniques. This is our customer's guarantee for an excellent quality. We have over 50 years of experience in technical textiles for following applications:

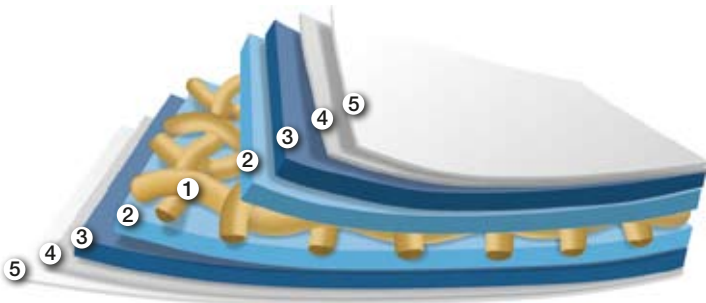
- Textile architecture
- High speed doors
- Fences and facades
- Waterproofing
- Filtration and construction
- Ventilation
- Insulation
- Pond



# TEXTILE ARCHITECTURE

## Sioen textile architecture membranes “the 9-layer fabric”

As a fully integrated coater, Sioen designed and fine tuned its machinery with a view to produce high quality textile architecture membranes with the utmost care. The success of the technology is based on the full integration of each critical process step as there is the spinning of the yarns, the weaving, the fabric pre-treatment, the chemicals and the formulation of the topcoats being used.



- ① Pre treated base fabric PES high tenacity yarn – extra strong, stabilised and flattened
- ② First coating layer with extra adhesion characteristics
- ③ Second coating layer highly pigmented with a UV stable pigmentation
- ④ Siofluo lacquering layer – extra UV and weather resistant
- ⑤ Siofluo lacquering layer – extra UV and weather resistant



## Your advantages:

**Clear white  
visual effect**

**Perfect  
weldability**

**Greatly  
enhanced  
cleaning  
ability**

**Perfect UV  
resistance**

**Protection  
against  
moisture**

**Resistant to  
temperature  
variation**



**High abrasion  
resistance**



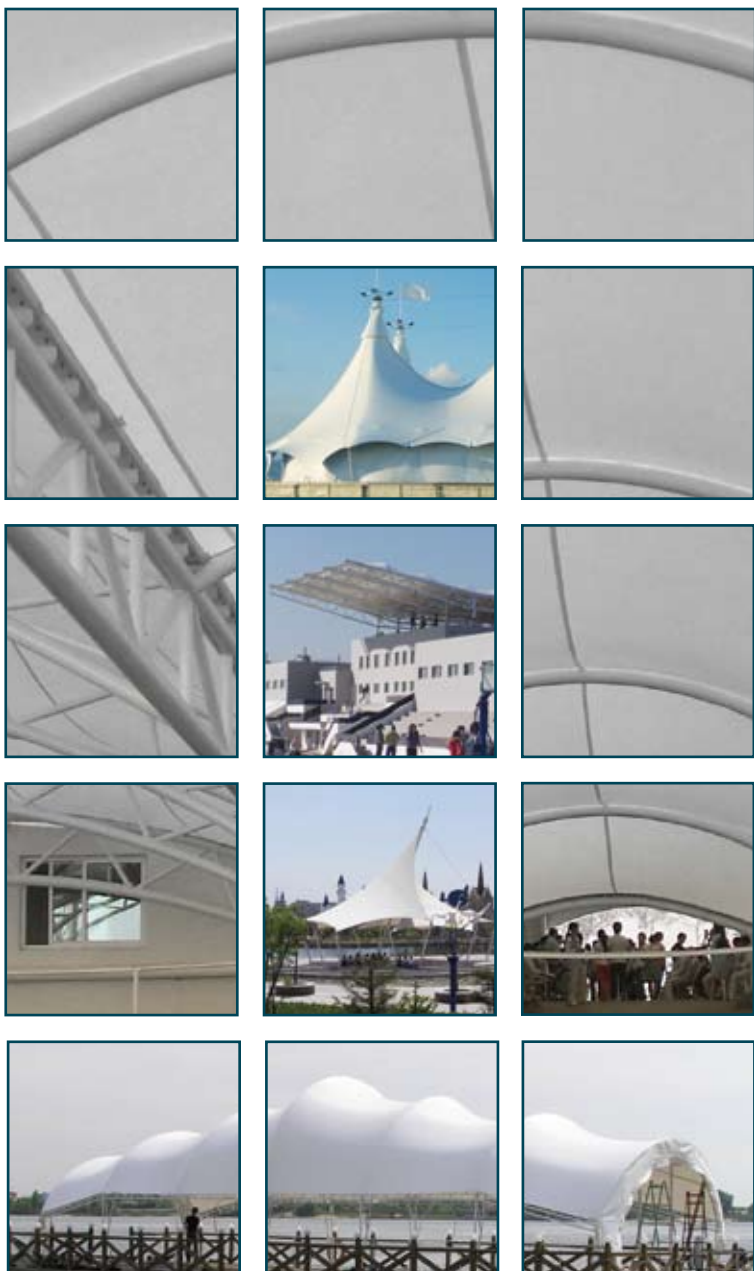
## New technology

The newly installed coating machine provides better overall tension of the textile architecture membranes. We coat back and front side in one run, immediately followed by a special lacquering treatment.

## Features

- Extra UV & thermal stability
- Sioen specs: high tear resistance and tensile strength
- Low wicking
- Self cleaning
- Sioen widths and colours
- Various types of lacquering





# **R**OLLING DOORS

For high speed doors and roller shutter doors, we have developed a special range of technical textiles. These are especially designed curtain materials for all kinds of rolling doors. The main characteristics of all our rolling door qualities are:

**Strong**

**Long life  
span,  
good UV  
stability**

**Extreme tear  
proof both in  
weft and in  
warp**

**Flexible even  
in extreme  
weather  
conditions**

**Ensures high  
wind stability  
in your  
constructions**

**Vast range  
of standard  
colours**

**Also  
corporate  
tailor made  
colours  
(per minimum  
1000 LM)**





# FENCING AND FACADES

Our scrims are the ideal material for fencing and facades. A fence or a free standing structure designed to restrict or prevent movement, often used as barriers. The technical textiles we produce at our online coating plant Veranneman Technical Textiles can be used for pool fences, agricultural fences, in gardening and landscaping, as temporary safety and security nets or as permanent architectural element in construction creating one way vision and solar protection for instance.

We produce a variety of standard products, available from stock. One of our main assets though is our tailor made production, especially engineered for your custom project.



# W

## ATERPROOFING MEMBRANES

We produce technical textiles for waterproofing and reinforcement of pool liners and PVC roofings. These open structure scrims stay relatively unaffected by water and strengthen the membrane. Waterproofing membranes can be used in single and multiple layers. We mainly produce PVC coated open structure polyester scrims.

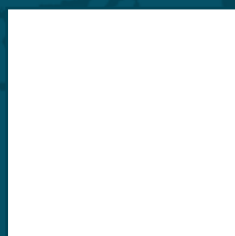
### VERANNEMAN TECHNICAL TEXTILES



# FILTRATION AND CONSTRUCTION

Our range includes technical woven open scrim fabrics for reinforcement of plaster, plastics and filter material.

## VERANNEMAN TECHNICAL TEXTILES



# V ENTILATION

Sioen produces technical textiles for extreme circumstances such as wind mill ventilation and for ventilation applications where anti-static fabrics are required.

Our know how and technological lead allow us to produce tailor made high end products that meet all your engineering requirements.

Do not hesitate to contact our sales and R&D team for any further information. [info@sioen.be](mailto:info@sioen.be)



# POND

We produce a series of pond liners and sheeting for water reservoirs, used in the construction of recreational ponds and industrial reservoirs, cultivating beds and dams, for customers worldwide.

On our calendering line (calendering is a process where polymers pass under rollers at high temperatures in order to produce (semi)-finished films) we produce pondliners of 0.46, 0.74 and 0.92 mm thick, weighing respectively 635, 1.020 or 1.270 g/m<sup>2</sup> in a 200 cm width.

The other main characteristics are: no fish intoxication and resistance against root penetration.

**Pond  
landscaping**

**Garden  
ponds**

**Industrial  
use**

For additional information and technical data sheets on these products please contact: [sioenfabrics@sioen.be](mailto:sioenfabrics@sioen.be)

T:0032 56 85 68 80

**SIOEN** CALENDERING



**For further information,  
please contact our sales team.**

**SIOEN** INDUSTRIES

Fabriekstraat 23 | 8850 Ardooie | Belgium | T +32 51 74 09 00 | F +32 51 74 09 64 |

[sioline@sioen.be](mailto:sioline@sioen.be) | [www.sioen.com](http://www.sioen.com)